

ELECTRIC STAND-UP COUNTERBALANCED FORKLIFT

Model :

T-CQDH20C

Max. lift height :

354"

(2200 lbs lifting)

AC

EPS



Advantages :

SAFETY AND PRODUCTIVITY

- Powered by a large AC drive motor, no need to replace carbonbrush, excellent inclined ramp starting performance.
- EPS as standard, presenting a light and relaxing steering experience in every turn.
- Two model function can control the speed of lift and lowering.
- Low center of gravity, excellent stability during operation.
- Small turning radius, good turning performance.
- The speed of driving and lifting is controllable simultaneously.
- Shock absorber system reduces the operation noise in great deal.
- Wide view mast and clear visibility.
- With full free lifting, able to work in confined space.
- Imported proportional hydraulic valve, adjustable speed for lifting / lowering.
- Multi-function display: battery status, hour meter, fault code, slowrunning state, etc.
- 39" reaching distance with double scissers.
- The mast fixed with the frame, when forks move forward, the mast becomes the balance weight.
- Advanced 36V electric control system, smaller electric current, ensuring the reliability of the battery system.
- High speed of lifting and lowering, 300% faster than normal typetruck.

STRUCTURAL

- Side way battery, easy to replace and service.
- CANbus technology reduces wiring complexity, making the line clear and orderly, increases the truck's reliability and easy to repair.
- The Mast can be separate.



Joystick Controller

Finger-operated joystick controller, designed for smooth and precise control of multiple functions.



Electric Power Steering

Electric Power Steering as standard feature, with smart steering wheel present a light and relaxing steering experience in operation.



Curtis controller and display

36V CURTIS AC control system, smaller electric current to ensure the reliability of the battery system. Multi-function display for battery status, hour meter, fault code, slow running state, etc.

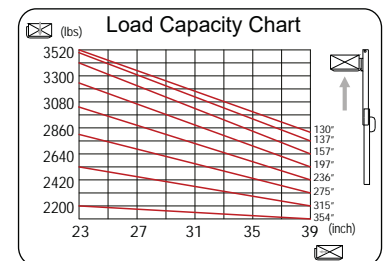
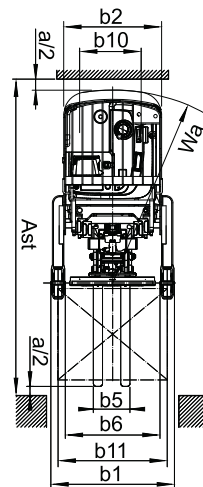
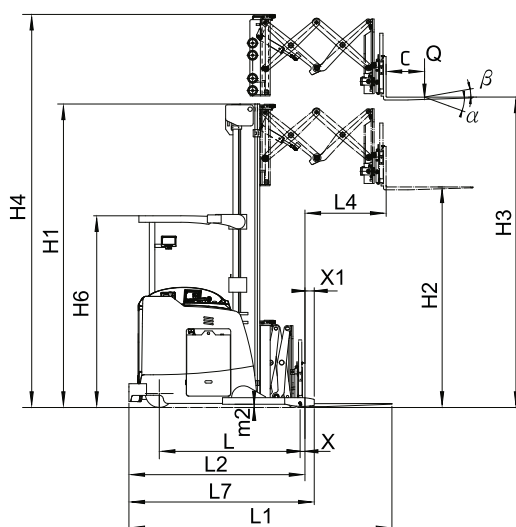


Heavy mast steel

C type heavy gauge mast steel from Germany, met with strong structure design and construction delivers powerful performance and superior reliability.

Model	T-CQDH20C (double scissor)	
Drive type		Battery
Load capacity / rated load	Q (lbs)	3520
Load centre distance	C (inch)	23.6
Load distance, centre of drive axle to fork	X (inch)	2.4
Tyre size, front	inch	13.5x5.5 & 6.3x2.4(x2)
Tyre size, rear	inch	4.9x3.2 (x4)
Wheels, number front rear (x = driven wheels)		1x+2/4
Mast/Forks, tilt forward/back	Grad	2° / 5°
Height, lowered	H1 (inch)	147.3
Free lift	H2 (inch)	108.5
Max. lift height	H3 (inch)	354 (Triplex mast)
Height, mast extended	H4 (inch)	397.8
Height of overhead guard	H6 (inch)	93
Overall width	b1/b2 (inch)	53 / 42
Overall length	L1 (inch)	127.9
Length to face of forks	L2 (inch)	85.8
Fork dimensions (S x E x L)	inch	1.6 x 3.9 x 42
Reach distance	L4 (inch)	39.3
Width overall forks	b5 (inch)	7.8 - 26.7
Wheelbase ground distance	m2 (inch)	1.6
Aisle width, with pallet 40"x48" crosswise	Ast (inch)	142
Aisle width, with pallet 31.5"x48" lengthwise	Ast (inch)	144.3
Turning radius	Wa (inch)	84.4
Travel speed (laden / unladen)	mph	6.5 / 6.8
Lift speed (laden / unladen)	mph	0.64 / 0.64
Lowering speed (laden / unladen)	mph	1.0 / 1.0
Battery voltage, nominal capacity K5	V/Ah	36 / 1000
Battery weight	lbs	2640
Battery dimensions	inch	38.5 x 21.1 x 30.1
Service weight (with battery)	lbs	12787

*Option: Single scissor fork reach available.



TAILIFT MATERIAL HANDLING TAIWAN CO., LTD.

No. 5, Zili 1st Road, Nankang Industrial Zone, Nantou city 540, TAIWAN

Tel: +886-49-2263800 Fax: +886-49- 2252919

Website: www.tailift.com E-mail: insales@tailift.com.tw

TAILIFT MATERIAL HANDLING USA, Inc.

5550 Jurupa St, Ontario, CA 91761

TEL: (909) 930-9801, (909) 930-9802 FAX: (909) 930-9739

Website: www.tailift-usa.com

