

SALES MANUAL

ELECTRIC REACH TRUCK

T-CQDH
T-CQDH18C
T-CQDH20C

TAILIFT MATERIAL HANDLING

USA, INC.

www.tailift-usa.com

Market & Planning,
Taiwan, 2022

Doc. S/N: DEM057
Edition:02

CONTENTS

1	STANDARD MODEL AVAILABILITY CHART	Page 1	~	Page 1
2	MODEL CODING (NAME PLATE)	Page 2	~	Page 2
3	EQUIPMENT AND ACCESSORIES	Page 3	~	Page 3
4	FORKLIFT TRUCKS SPECIFICATION	Page 4	~	Page 6
5	MAST SPECIFICATION & RATED CAPACITIES	Page 7	~	Page 8
6	CAPACITY CHART	Page 9	~	Page 9
7	WEIGHT LIST	Page 10	~	Page 10
8	TYRE SIZE	Page 11	~	Page 11
9	CARRIAGE & LOAD BACKREST SPECIFICATION	Page 12	~	Page 12
10	CONTROLLER SPECIFICATION	Page 13	~	Page 13
11	LOAD CAPACITY	Page 14	~	Page 15



STANDARD MODEL AVAILABILITY CHART

Series : T-CQDH

Model : T-CQDH18C, T-CQDH120C

Series	Model	Load Capacity Load center		Controller		Mast type	STD. FH
		lbs	Inch	CURTIS 1234E	CURTIS 1234SE		
T-CQDH	T-CQDH18C (single scissor)	4000	24	●		V	118
T-CQDH	T-CQDH20C (single scissor)	4400	24		●	T	354

●: Standard

FH: Standard for forklift height




V: DUPLEX MAST / T: TRIPLEX MAST / F: FULL FREE LIFT MAST

MODEL CODING (NAME PLATE)

Series : T-CQDH

Model : T-CQDH18C, T-CQDH120C

NAME PLATE

		 TOYOTA INDUSTRIES GROUP			
MODEL	<input type="text"/>	LOAD CENTER	<input type="text"/> in	CAPACITY AT MAX. HEIGHT	<input type="text"/> lbs
SERIAL#	<input type="text"/>	LIFTING HEIGHT	<input type="text"/> in	MIN. BATTERY WEIGHT	<input type="text"/> lbs
VOLTAGE	<input type="text"/> V	FORK LENGTH	<input type="text"/> in	SERVICE WEIGHT WITHOUT BATTERY	<input type="text"/> lbs
MFG. YEAR	<input type="text"/>	CAPACITY	<input type="text"/> lbs		
TAILIFT MATERIAL HANDLING TAIWAN CO., LTD. NO.5, ZILI 1ST RD.,NANGANG IND.DIST.,TAIWAN R.O.C.					

EQUIPMENT AND ACCESSORIES

Series : T-CQDH

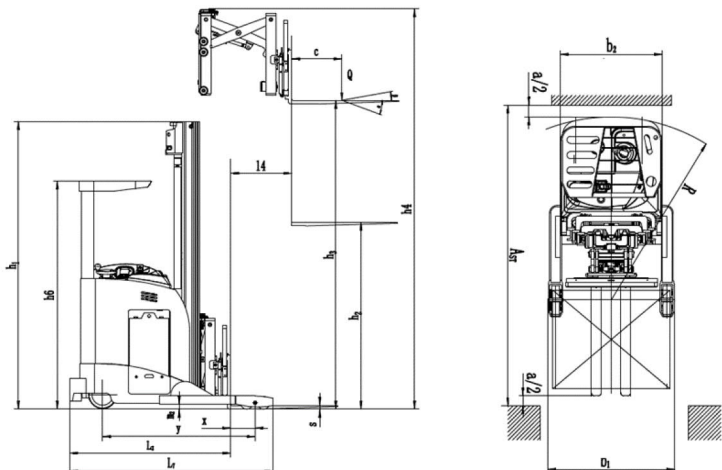
Model : T-CQDH18C、 T-CQDH20C

Item	Model	Specification	Note
1	CQDH18C	CURTIS 1234E(36V AC) Controller / Mast Duplex 3.0M	STD
2		Capacity 4000lbs (1800kg)	STD
3		Electromagnetic control valve with Joystick	STD
4		PU wheels with EPS(AC)	STD
5		Standard back pad	STD
6		Power supply 12V Display	STD
7		Turn the steering wheel right, the truck moves left	STD
8		Mast Duplex 3.5M	OPTION
9		Mast Triplex 4.0M	OPTION
10		Mast Triplex 4.5M	OPTION
11		Mast Triplex 5.0M	OPTION
12		Mast Triplex 5.5M	OPTION
13		Mast Triplex 6.0M	OPTION
14		Mast Triplex 6.5M	OPTION
15		Mast Triplex7.0M	OPTION
16		Side Shifter	OPTION
17		Longer Forks 54"	OPTION
18		Lead-Acid Battery 36V / 700AH	OPTION
19		Charger 36V / 90A	OPTION
20		Cold Storage	OPTION
21		Automatic Water Replenishing Device	OPTION
22		flash warning light yellow	OPTION
23	CQDH20C	CURTIS 1234SE (36V AC) Controller / Mast Triplex 6.6M	STD
24		Capacity 4400lbs (2000kg)	STD
25		Electromagnetic control valve with Joystick	STD
26		PU wheels with EPS(AC)	STD
27		Standard back pad	STD
28		Power supply 12V Display	STD
29		Turn the steering wheel right, the truck moves left	STD
30		Mast Triplex 7.0M	OPTION
31		Mast Triplex 7.67	OPTION
32		Mast Triplex 8.1M	OPTION
33		Mast Triplex 9.0M	OPTION
34		Lead-Acid Battery 36V / 700AH (for 6.5m/7m/7.67m)	OPTION
35		Charger 36V/ 90A/700AH (for 6.5m/7m/7.67m)	OPTION
36		Lead-Acid Battery 36V / 1000AH (for 8.1m/9m)	OPTION
37		Charger 36V/130A/1000AH (for 8.1m/9m)	OPTION
38		cold storage	OPTION
39		Side Shifter	OPTION
40		Longer Forks 54"	OPTION
41		carrige 37" & ID=49"	STD
42		Automatic Water Replenishing Device	OPTION
43		Yellow warning light	OPTION
44		Lithium battery 36V/700AH and charger 36V/200A (for 8.1m/9m)	OPTION
45		heating system for Lithium battery	OPTION

FORKLIFT TRUCKS SPECIFICATION

Model	T-CQDH18C (Single scissor)								
		Battery			Battery				
Drive type		Battery			Battery				
Load capacity/ Rated Load	Q(lbs)	4000			4000				
Load centre distance	c(in)	24			24				
Load distance, centre of drive axle fork	x(in)	9.7			9.7				
Tyre Size, front	in	11*4+6*2*2			11*4+6*2*2				
Tyre size, rear	in	5*3(4)			5*3(4)				
Wheels, number front rear(x=driven wheels)		1*+2/4			1*+2/4				
Tilt of mast/fork carriage forward/backward	α/β (deg)	2/5			2/5				
Height, mast lowered	h1(in)	83.7	93.5	103.3	86.0	92.3	98.6	105.3	111.6
Free Lift	h2(in)	~	~	~	62.0	66.9	71.9	78.7	83.7
Max. Lift height	h3(in)	118.1	137.8	157.5	177.2	196.9	216.5	236.2	255.9
Height, mast extended	h4(in)	153.5	173.2	192.9	212.6	232.3	252.0	271.7	290.6
Height of overhead guard	h6(in)	88.4			88.4				
Overall width	b1/b2(in)	51/41			51/41				
Overall length	l1(in)	106.9			106.9				
Length to face of forks	l2(in)	63.7			63.7				
Fork Dimension	s/e/l(in)	1.6/4/42			1.6/4/42				
Reach distance	l4(in)	19.7			19.7				
Fork height, lowered	h8(in)	1.6			1.6				
Wheelbase	y(in)	60.0			60.0				
Distance of "X" (see below diagram)	in	17.7			17.7				
Overall length(excluding the fork)	in	79.6			79.6				
Ground clearance,center of wheelbase	m2(in)	1.9			1.9				
Aisle Width for pallets 1000*1200 crossways	Ast(in)	118.6			118.6				
Aisle Width for pallets 800*1200 crossways	Ast(in)	121.5			121.5				
Turning radius	R(in)	72.8			72.8				
Travel Speed,laden/unladen	mph	4/4.3			4/4.3				
Lift speed,laden/unladen	fpm	39/59			39/59				
Lowering speed, laden/unladen	fpm	63/61			63/61				
Battery voltage, nominal capacity K5	V/Ah	36/700			36/700				
Battery weight	lbs	1785.726			1785.726				
Battery dimension l/w/h	in	38.5*16*30			38.5*16*30				
Service weight(with battery)	lbs	7297	7407	7518	7826	8047	8267	8488	8708

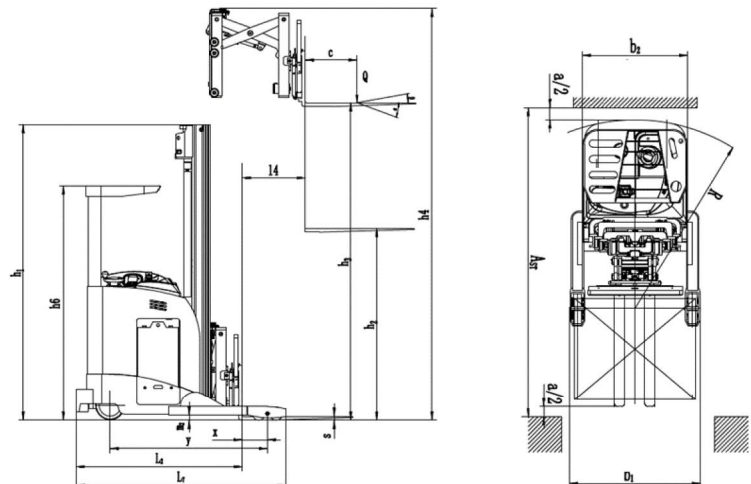
* This is only for reference and not subject to notice in advance



FORKLIFT TRUCKS SPECIFICATION

Model	T-CQDH18C (double scissor)										
Drive type		Battery					Battery				
Load capacity/ Rated Load	Q(lbs)	4000					4000				
Load centre distance	c(in)	24					24				
Load distance, centre of drive axle fork	x(in)	4.8					3.9				
Tyre Size, front	in	11*4+6*2*2					11*4+6*2*2				
Tyre size, rear	in	5*3(4)					5*3(4)				
Wheels, number front rear(x=driven wheels)		1*+2/4					1*+2/4				
Tilt of mast/fork carriage forward/backward	α/β (deg)	2/5					2/5				
Height, mast lowered	h1(in)	83.7	93.5	103.3	86.0	92.3	98.6	105.3	111.6		
Free Lift	h2(in)	~	~	~	62.0	66.9	71.9	78.7	83.7		
Max. Lift height	h3(in)	118.1	137.8	157.5	177.2	196.9	216.5	236.2	255.9		
Height, mast extended	h4(in)	158.9	178.5	198.2	217.9	237.6	257.3	277.0	296.7		
Height of overhead guard	h6(in)	88.4					88.4				
Overall width	b1/b2(in)	51/41					51/41				
Overall length	l1(in)	101.8					102.7				
Length to face of forks	l2(in)	68.0					68.9				
Fork Dimension	s/e/l(in)	1.6/4/42					1.6/4/42				
Reach distance	l4(in)	47.2					47.2				
Fork height, lowered	h8(in)	1.6					1.6				
Wheelbase	y(in)	64.2					64.2				
Distance of "X" (see below diagram)	in	17.7					17.7				
Overall length(excluding the fork)	in	79.6					79.6				
Ground clearance,center of wheelbase	m2(in)	1.9					1.9				
Aisle Width for pallets 1000*1200 crossways	Ast(in)	122.4					123.3				
Aisle Width for pallets 800*1200 crossways	Ast(in)	125.9					126.8				
Turning radius	R(in)	72.8					72.8				
Travel Speed,laden/unladen	mph	4/4.3					4/4.3				
Lift speed,laden/unladen	fpm	39/59					39/59				
Lowering speed, laden/unladen	fpm	63/61					63/61				
Battery voltage, nominal capacity K5	V/Ah	36/700					36/700				
Battery weight	lbs	1785.726					1785.726				
Battery dimension l/w/h	in	38.5*16*30					38.5*16*30				
Service weight(with battery)	lbs	7502	7612	7832	8140	8360	8580	8800	9020		

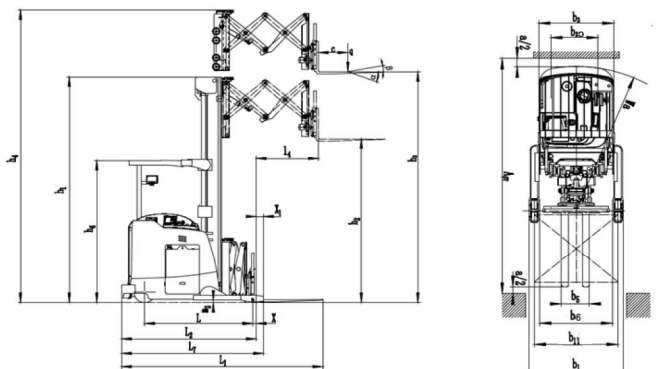
* This is only for reference and not subject to notice in advance.



FORKLIFT TRUCKS SPECIFICATION

Model		T-CQDH20C (Double scissors)				T-CQDH20C (Single Scissor)
Drive type		Electric				Electric
Operation type		Stand-Up				Standing
Rated load	Q(lbs)	3500				4400
Load center distance	c(in)	24.0				24.0
Front overhang	X(in)	2.5				3.6
Wheelbase	Y(in)	68.9				68.9
Wheel (rubber, high elasticity, pneumatic tyre, polyurethane)		PU				PU
Wheel dimension, front	in	13.5x5.5+6.3x2.4x2				13.5x5.5+6.3x2.4x2
Wheel dimension, rear	in	5x3x4				5x3x4
Wheel number, front/rear		1x+2/4				1x+2/4
Tread, front	b10(in)	26.7				26.7
Mast/fork tilt angle, front/rear	α/β (deg)	2/5				2/5
Height of mast, lowered	h1(in)	93.1	108.8	115.5	147.4	132.5
Free lift height	h2(in)	48.2	67.7	74.4	108.5	96.9
Lift height	h3(in)	177.2	236.2	255.9	354.3	302.0
Max. height of mast, extended	h4(in)	220.6	279.7	299.4	397.8	337.4
Overall length	l1(in)	128.0				117.5
Length of fork face to rear end	l2 (in)	85.8				75.4
Length of fork leg face to rear end	l7 (in)	90.0				85.9
Truck width	b2(in)	42.1				42.1
Fork dimension	s/e/l(in)	1.6 x 4 x 42				1.6 x 4 x 42
Reach distance	l4(in)	39.4				19.7
Wheelbase ground clearance	m2(in)	1.6				1.6
Aisle width for pallets 1000x1200 crossways	Ast(in)	142.1				131.1
Aisle width for pallets 800x1200 lengthways	Ast(in)	144.4				134.6
Turning radius	Wa(in)	84.4				80.3
Travel speed, laden/unladen	mph	6.5/6.8				6.5/6.8
Lift speed, laden/unladen	fpm	57/76.7				51.1/63 (Pending)
Lower speed, laden/unladen	fpm	88.5/88.5				88.5/88.5 (Pending)
Max. gradeability, laden/unladen	%	10/15				10/15
Traveling brake		Electromagnetic brake				Electric Magnetic Brake
Drive motor power	kW	7 (AC)				7 (AC)
Lift motor power	kW	14 (AC)				14 (AC)
Battery voltage/rated capacity	V/Ah	36/700	36/700	36/700	36/1000	36/700(1000)
Battery dimension (LXWXH)	in	38.5x21.1x30				38.5x21.1x30
Battery weight	lbs	2645.5				2645.5
Noise level at driver's ear according to DIN12053	dB(A)	75				75
Height of overhead guard	h6 (in)	93.0				93.0
Distance from fork face to straddle leg face, with fork lowered	X1(in)	4.4				10.5
Width of straddle leg/tread, rear	b11(in)	47.1				47.1
Inner width of straddle leg	b6(in)	40.9				40.9
Outer width of straddle leg	b1(in)	53.2				53.2
Adjustable fork width	b5(in)	7.9-36				7.9-26.8

* This is only for reference and not subject to notice in advance.



MAST SPECIFICATION & RATED CAPACITIES

Series : T-CQDH

Model : T-CQDH 18C (SINGLE SCISSOR)

Mast type	Mast Height	Max. fork height		Overall height				FREE LIFT		Tilt angle		Load capacity			
				Lowered		Extended		With STD backrest		FWD	BWD	600mm load centre			
						With STD backrest						WITHOUT SIDESHIFT		WITH SIDESHIFT	
				STD		Hook-On									
		mm	(in)	mm	(in)	mm	(in)	mm	(in)	deg	deg	kg	(lb)	kg	(lb)
Two stage	3000	3000	(118.1)	2125	(83.7)	3881	(152.8)	\	\	2	5	1800	(3960)	1600	(3520)
	3500	3500	(137.8)	2375	(93.5)	4381	(172.5)	\	\	2	5	1600	(3520)	1400	(3080)
	4000	4000	(157.5)	2625	(103.3)	4881	(192.2)	\	\	2	5	1400	(3080)	1200	(2640)
Three stage	4500	4500	(177.2)	2185	(86.0)	5381	(211.9)	1575	(62.0)	2	5	1200	(2640)	1000	(2200)
	5000	5000	(196.9)	2345	(92.3)	5881	(231.5)	1700	(66.9)	2	5	1000	(2200)	900	(1980)
	5500	5500	(216.5)	2505	(98.6)	6381	(251.2)	1825	(71.9)	2	5	900	(1980)	800	(1760)
	6000	6000	(236.2)	2675	(105.3)	6881	(270.9)	2000	(78.7)	2	5	800	(1760)	700	(1540)
	6500	6500	(255.9)	2840	(111.8)	7381	(290.6)	2125	(83.7)	2	5	700	(1540)	600	(1320)

Series : T-CQDH

Model : T-CQDH 18C (DOUBLE SCISSOR)

Mast type	Mast Height	Max. fork height		Overall height				FREE LIFT		Tilt angle		Load capacity			
				Lowered		Extended		With STD backrest		FWD	BWD	600mm load centre			
						With STD backrest						WITHOUT SIDESHIFT		WITH SIDESHIFT	
				STD		Hook-On									
		mm	(in)	mm	(in)	mm	(in)	mm	(in)	deg	deg	kg	(lb)	kg	(lb)
Two stage	3000	3000	(118.1)	2125	(83.7)	4035	(158.9)	0	(0.0)	2	5	1000	(2200)	800	(1760)
	3500	3500	(137.8)	2375	(93.5)	4535	(178.5)	0	(0.0)	2	5	900	(1980)	700	(1540)
	4000	4000	(157.5)	2625	(103.3)	5035	(198.2)	0	(0.0)	2	5	800	(1760)	600	(1320)
Three stage	4500	4500	(177.2)	2185	(86.0)	5535	(217.9)	1575	(62.0)	2	5	700	(1540)	500	(1100)
	5000	5000	(196.9)	2345	(92.3)	6035	(237.6)	1700	(66.9)	2	5	650	(1430)	450	(990)
	5500	5500	(216.5)	2505	(98.6)	6535	(257.3)	1825	(71.9)	2	5	550	(1210)	400	(880)
	6000	6000	(236.2)	2675	(105.3)	7035	(277.0)	2000	(78.7)	2	5	450	(990)	350	(770)
	6500	6500	(255.9)	2840	(111.8)	7535	(296.7)	2125	(83.7)	2	5	400	(880)	300	(660)

MAST SPECIFICATION & RATED CAPACITIES

Series : T-CQDH

Model : T-CQDH 20C (DOUBLE SCISSOR)

Mast type	Mast Type	Max. fork height		Overall height				FREE LIFT		Tilt angle		Load capacity	
				Lowered		Extended		With STD backrest		FWD	BWD	600mm load centre	
						With STD backres						WITH SIDESHIFT	
				mm	(in)	mm	(in)	mm	(in)	mm	(in)	deg	deg
Three stage	9000	9000	(354.3)	3743	(147.4)	10104	(397.8)	2756	(108.5)	2	5	1000	(2200)

Series : T-CQDH

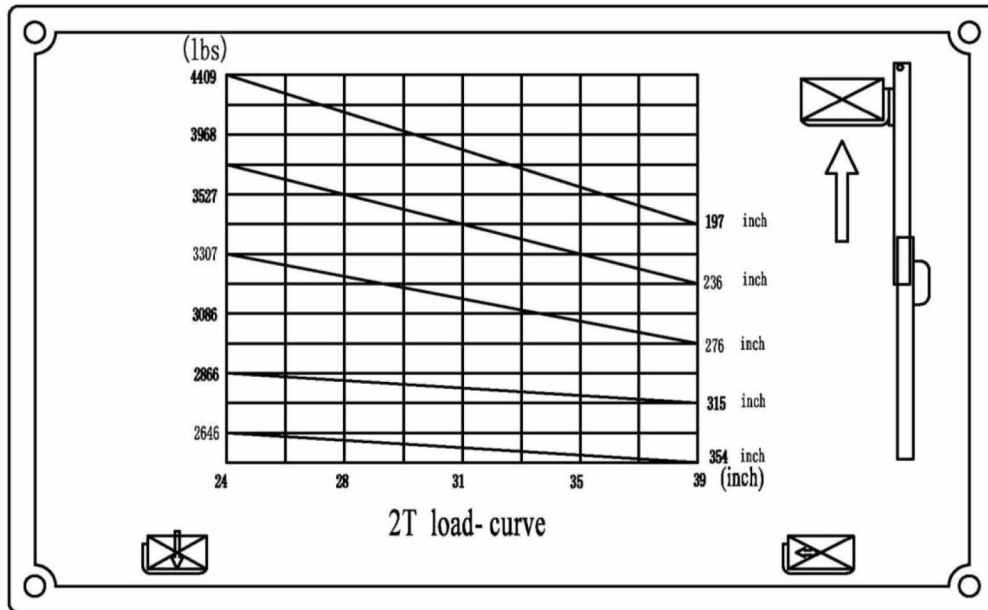
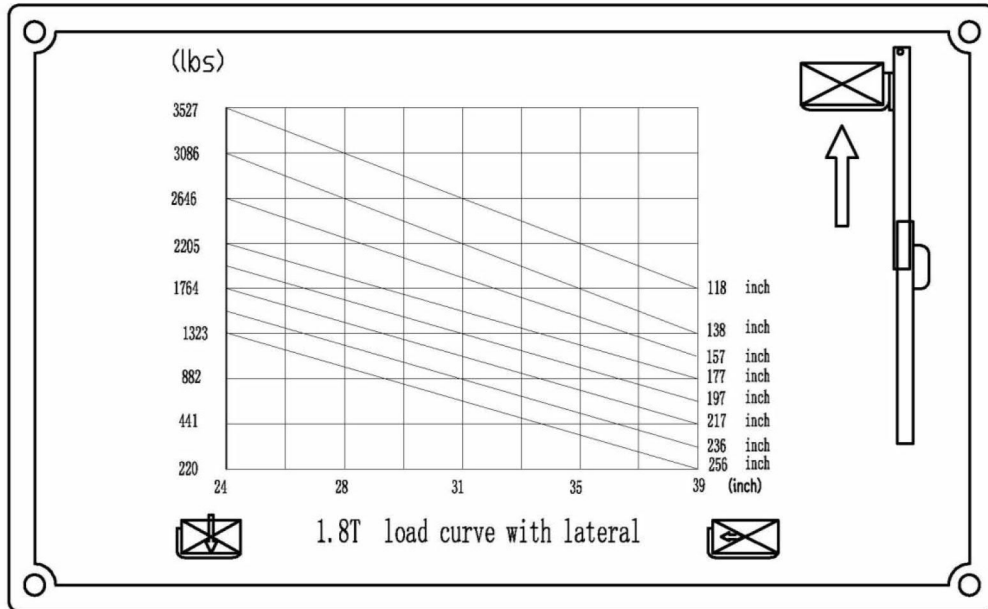
Model : T-CQDH 20C (SINGLE SCISSOR)

Mast type	Mast Type	Max. fork height		Overall height				FREE LIFT		Tilt angle		Load capacity	
				Lowered		Extended		With STD backrest		FWD	BWD	600mm load centre	
						With STD backres						WITH SIDESHIFT	
				mm	(in)	mm	(in)	mm	(in)	mm	(in)	deg	deg
Three stage	7670	7670	(302.0)	3366	(132.5)	8570	(337.4)	2460	(96.9)	2	5	1350	(2970)

CAPACITY CHART

Series : T-CQDH

Model : T-CQDH18C, T-CQDH20C



WEIGHT LIST

Series : T-CQDH
 Model : T-CQDH18C、 T-CQDH20C

Weight (lbs)

Truck Weight (With tire)				
Mast type		T-CQDH 18C		T-CQDH 20C
		SINGLE SCISSOR	DOUBLE SCISSORS	DOUBLE SCISSORS
Two stage	118	7297	7518	-
	138	7407	7628	-
	157	7518	7848	-
Three stage	177	7826	8157	-
	197	8047	8377	-
	217	8267	8598	-
	236	8333	8642	-
	256	8708	9039	-
	354	-	-	13228

TYRE SIZE

Series : T-CQDH
 Model : T-CQDH18C, T-CQDH20C

■ Tyre Size

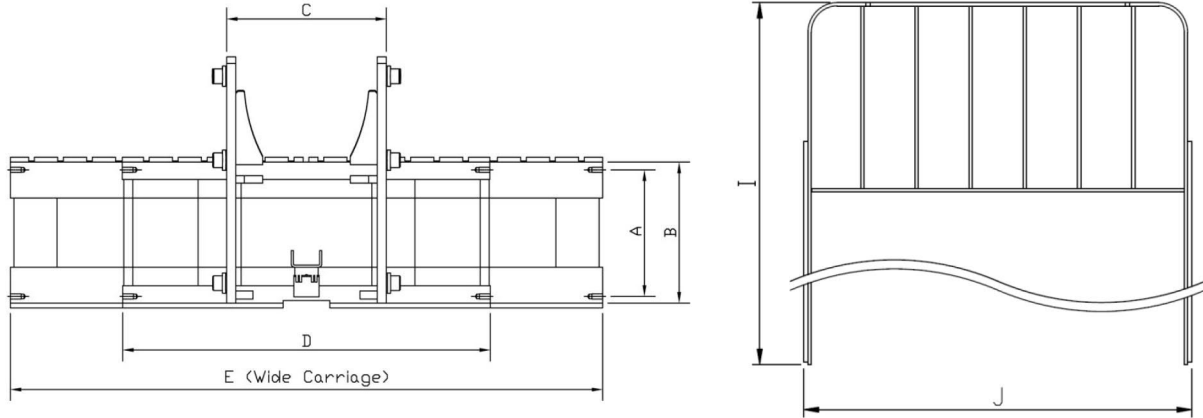
●: Standard ○:Option

Model		T-CQDH18C	T-CQDH20C
Front	Single	Tyre Size	
		11*4+6*2	13.5x5.5+6.3x2.4
		Tyre	Solid wheel
		●	●
Rear	Single	Tyre Size	
		5*3	5x3
		Tyre	Solid wheel
		●	●

CARRIAGE & LOAD BACKREST SPECIFICATION

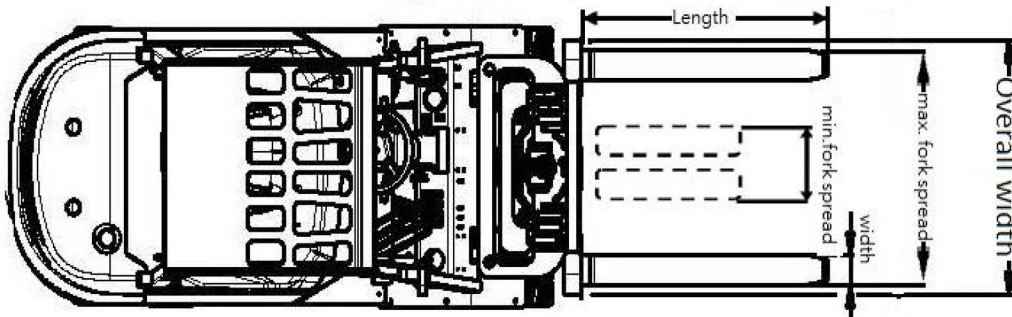
Series: T-CQDH
 Model: T-CQDH18C, T-CQDH20C

■ Carriage & Backrest Dimensions



				T-CQDH 18C	T-CQDH 20C
Truck width	Standard		in	51	53
	Double wheel		in	\	\
Carriage	Class			II	II
	Pitch	A	in	4	4
	Height	B	in	15	15
	Width	C	in	29	29
	STD Wide	D	in	36	36
	Wide carriage	E	in	\	\
	No. of Rollers			4	4
Backrest height	STD	I	in	20	20
	STD wide	J	in	37	37
	Wide carriage	J	in	\	\

■ Fork Dimensions



				T-CQDH 18C	T-CQDH 20C
Fork spread	Min. fork spread		in	8	8
	Max. fork spread		in	27	27
	Wide carriage		in	\	\
STD Fork	Length		in	42	42
	Thickness x Width		in	1.6*3.9	1.6*3.9
	Class			2A	2A

CONTROLLER SPECIFICATION

Controller	INMOTION	CURTIS 1234E-5321	CURTIS 1234SE	CURTIS 1232E
Voltage	33-63V	36-48V	24-36V	24
Peak Current (48V)	350A	350A	500A	250A
Cont. Current (48V)	150A	90A	210A	100A
Inverter work frequency	12KHZ	10KHZ		
DC Chopper Maximum Current (48V)	\	175A	235A	125A
Operating Ambient Temp.	-40°C to 95°C (-40°F to 203°F)	-40°C to 95°C (-40°F to 203°F)		
Max. Heatsink Temp.	85°C (185°F) to 95°C (203°F)	85°C (185°F) to 95°C (203°F)		
Model Type	T-FB 20R	T-CPD20SR-18	T-CQDH20C	T-CBD25R-II
	T-FB 25R	T-CQDH18C	T-CQD15	T-CBD30R-II
	T-CQD20	T-CBD25T	T-CQD20H	T-CDDK15-III
	-	T-CBD30T	T-OPS15	-
	-	-	-	-

Controller	CURTIS 1212P	KLS48101D	ZAPI-AC0	PVM48S05
Voltage	24V	24V-48V	24-36-48V	24-48V
Peak Current (48V)	/	130A	continues 2 mins 24V (150A) 36V (200A) 48V (100A)	50A
Cont. Current (48V)	/	60A	100A	30A
Inverter work frequency	15.6 kHz	/		
DC Chopper Maximum Current (48V)	/	/	/	/
Operating Ambient Temp.	-25°C to 50°C (-13°F to 122°F)	-20°C to 85°C		
Max. Heat sink Temp.	80°C to 105°C (176°F to 122°F)	70°C		
Model Type	T-CBD15	T-CDDK10-III	T-CBD18KD	T-CBD15W-Lix
	T-CDD10R-E	T-CDDK12-III	-	-
	T-CDD12R-E	-	-	-
	T-CTD10R-E	-	-	-
	T-CTD12R-E	-	-	-

LOAD CAPACITY

Series: T-CQDH

Model: T-CQDH18C

WITHOUT SIDESHIFT		Mast type	Mast Height (in)	T-CQDH 18C (SINGLE SCISSOR)						
				Load capacity(lb)						
				20	24	28	32	36	40	44
tire	STD	Two stage	118	-	3960	3520	-	-	-	-
			138	-	3520	3080	-	-	-	-
			157	-	3080	2640	-	-	-	-
		Three stage	177	-	2640	2200	-	-	-	-
			197	-	2200	1980	-	-	-	-
			217	-	1980	1650	-	-	-	-
	236		-	1760	1430	-	-	-	-	
	256	-	1540	1210	-	-	-	-		

WITH SIDESHIFT		Mast type	Mast Height (in)	T-CQDH 18C (SINGLE SCISSOR)						
				Load capacity(lb)						
				20	24	28	32	36	40	44
tire	STD	Two stage	118	-	3520	3080	-	-	-	-
			138	-	3080	2640	-	-	-	-
			157	-	2640	2200	-	-	-	-
		Three stage	177	-	2200	1980	-	-	-	-
			197	-	1980	1760	-	-	-	-
			217	-	1760	1430	-	-	-	-
	236		-	1540	1210	-	-	-	-	
	256	-	1320	990	-	-	-	-		

WITHOUT SIDESHIFT		Mast type	Mast Height (in)	T-CQDH 18C (DOUBLE SCISSOR)						
				Load capacity(lb)						
				20	24	28	32	36	40	44
tire	STD	Two stage	118	-	2200	1760	-	-	-	-
			138	-	1980	1540	-	-	-	-
			157	-	1760	1320	-	-	-	-
		Three stage	177	-	1540	1100	-	-	-	-
			197	-	1430	990	-	-	-	-
			217	-	1210	880	-	-	-	-
	236		-	990	770	-	-	-	-	
	256	-	880	660	-	-	-	-		

WITH SIDESHIFT		Mast type	Mast Height (in)	T-CQDH 18C (DOUBLE SCISSOR)						
				Load capacity(lb)						
				20	24	28	32	36	40	44
tire	STD	Two stage	118	-	2130	1690	-	-	-	-
			138	-	1910	1470	-	-	-	-
			157	-	1690	1250	-	-	-	-
		Three stage	177	-	1470	1030	-	-	-	-
			197	-	1360	920	-	-	-	-
			217	-	1140	810	-	-	-	-
	236		-	920	700	-	-	-	-	
	256	-	840	590	-	-	-	-		

LOAD CAPACITY

Series: T-CQDH

Model: T-CQDH20C

WITHOUT SIDESHIFT		Mast type	Mast Height (in)	T-CQDH 20C (DOUBLE SCISSOR)						
				Load capacity(lb)						
				20	24	28	32	36	40	44
tire	STD	Three stage	354	-	-	-	-	-	-	-

WITH SIDESHIFT		Mast type	Mast Height (in)	T-CQDH 20C (DOUBLE SCISSOR)						
				Load capacity(lb)						
				20	24	28	32	36	40	44
tire	STD	Three stage	354	-	2200	2070	-	-	-	-

WITHOUT SIDESHIFT		Mast type	Mast Height (in)	T-CQDH 20C (SINGLE SCISSOR)						
				Load capacity(lb)						
				20	24	28	32	36	40	44
tire	STD	Three stage	302	-	-	-	-	-	-	-

WITH SIDESHIFT		Mast type	Mast Height (in)	T-CQDH 20C (SINGLE SCISSOR)						
				Load capacity(lb)						
				20	24	28	32	36	40	44
tire	STD	Three stage	302	-	2970	2840	-	-	-	-

TAILIFT MATERIAL HANDLING

USA, INC.

www.tailift-usa.com