

Electric Reach Truck

Model:
T-CQD16

Max. lift height :

374 inch

AC



Advantages :

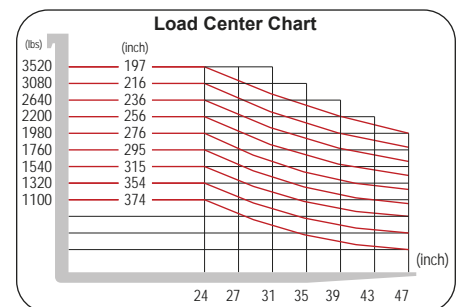
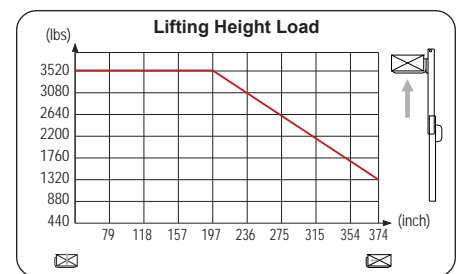
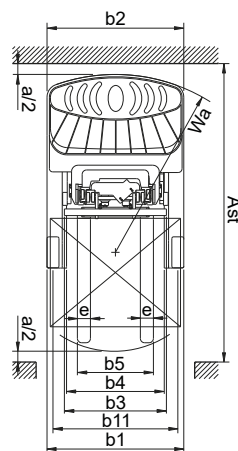
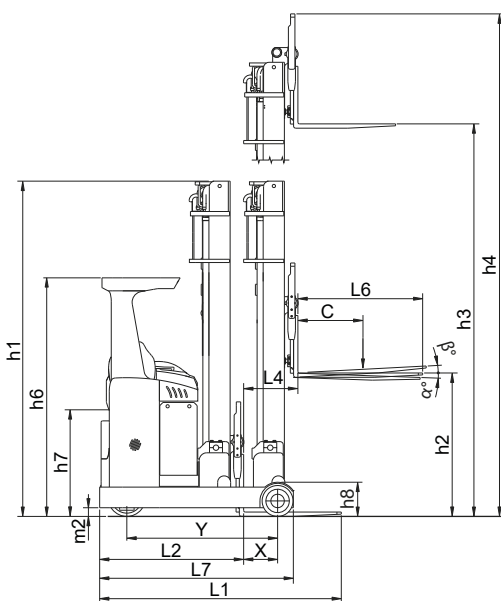
- With powerful drive motor, increase the production efficiency.
- Offers three different driving speed options (Low/medium/high).
- Standard With ELECTRIC POWER STEERING system (EPS), steering is very light.
- Hydraulic system with proportional lifting, with precisely speed control.
- Steering wheel can be turn at 360degrees and or 180 degrees, two type steering functions can be freely switched as demand.
- With new type mast structure, lifting cylinder on two sides of mast and provide wide view in the front.
- With integrated side shift improve the load capacity.
- The aisle width 108.2 inch, with very small turning radius is 64.6 inch.
- 3 phase AC control system motor, both lifting and driving motor are all AC free to maintenance. Improve the trucks stability.
- Have multifunction instrument : show steering wheel direction. BDI battery status, faulty code, different driven speed.



Option :

- Keypad ignition with PIN CODE, easy to access the management system of truck.
- High resolution camera, easy to operate for high fork position.
- Height position offers easier pallet handling at high height position.
- Side way moving battery.
- Provide different option of overhead guard width, have smaller overhead guard can operate in driven- in racking warehouse.

Model	T-CQD16	
Capacity / rated load	Q (lbs)	3520
Max. lift height	h3 (inch)	374
Load centre distance	C (inch)	23.6
Drive wheel	inch	Ø13.5 x 5.3
Fork wheel	inch	Ø11.2 x 4.3
Wheels, number front rear (x = driven wheels)		1x/2
Tilt of mast/fork (forward / backward)	$\alpha / \beta (^\circ)$	2° / 4°
Height, mast lowered	h1 (inch)	153.1
Free lift	h2 (inch)	126
Height, mast extended	h4 (inch)	413.4
Height of overhead guard (cabin)	h6 (inch)	86.6
Seat height / stand height	h7 (inch)	41.3
Height of crura	h8 (inch)	12.2
Overall length	L1 (inch)	94.5
Length to face of forks	L2 (inch)	52.0
Overall width	b1/b2 (inch)	49.6
Fork dimensions (S x E x L)	inch	1.4 x 3.9 x 42.1
Reach distance	L4 (inch)	22
Aisle width for pallets 39.4" x 47.2" crossways	Ast (inch)	108.3
Aisle width for pallets 31.5" x 47.2" lengthways	Ast (inch)	110.6
Turning radius	Wa (inch)	64.6
Travel speed (laden / unladen)	mph	7.5
Lift speed (laden / unladen)	mph	0.8 / 1.1
Lowering speed (laden / unladen)	mph	1.2 / 0.9
Battery voltage, nominal capacity R5	V/Ah	48 / 500
Battery weight	lbs	1940
Battery dimensions (L x W x H)	inch	48 x 13.5 x 28.6
Service weight (with battery)	lbs	7937



TAILIFT MATERIAL HANDLING TAIWAN CO., LTD.

No. 5, Zili 1st Road, Nankang Industrial Zone, Nantou city 540, TAIWAN

Tel: +886-49-2263800 Fax: +886-49- 2252919

Website: www.tailift.com E-mail: insales@tailift.com.tw

TAILIFT MATERIAL HANDLING USA, Inc.

5550 Jurupa St, Ontario, CA 91761

TEL: (909) 930-9801, (909) 930-9802 FAX: (909) 930-9739

Website: www.tailift-usa.com

