

Stand-up Counterbalance Forklift



Model :  
T-CPD20SR



AC

More productive and comfortable operation space.



Multi-function control Joy-stick



Advantages :

SAFETY AND STABILITY

- This feature appears especially important when in or out of the container, and carrying goods in congested area and narrow aisle. Standing type design with wide view, clear visibility.
- Imported drive wheel and mast.
- With multi-function LED display with BID can be programmed, include battery discharge, faulty code, drive direction, hour meter, brake situation etc.
- Advanced AC control system offers strong driven ability. No brush with generative brake.
- Offers three type driven speed : low speed , normal speed, high speed. You may choice according to different request.
- Multi-function type joy stick can control forward, reverse, mast lifting/lowering, tiling and sideshift etc. easy to operate.
- Germany made magnetic multi-valve, with proportional valve and offers adjustable lifting/lowering speed.
- Wet disc brake.

OFFERS 6 TYPE CONTROL SPEED

- System Controlled Hydraulic Speeds : The hydraulic system automatically controls tilt and stable side-shift speed to increase forklift stability and operator confidence.
- Travel Speed Control : truck can automatically controls travel speeds and braking based on fork height and other operating conditions.
- Cornering Speed Control : the truck will automatically adjust travel speed when steering.
- Ramp Speed Control : The intelligent control system can maintains holds truck stopped on the ramp until the operator start travel forward at a constant speed.

- Safe Speed Control : The forklift will slow down automatically if the foot of the operator places out of the standing platform.
- Lift/lower Speed Control : The operator can adjust the lift and lower speed by control handle.

ERGONOMICS

- With adjustable armrest, comfortable and stable. Suit for different height driver using.
- Large compartment for standing, with foot relax plate, can effectively relax foot while static operation.
- The standing platform has a good shock absorption, conform to ergonomic design to make the operation more comfortable.
- The adjustable armrest and seat provides padded support to ensure the hand comfortable and stable, and meet different requirements for the operators.

SERVICE ABILITY

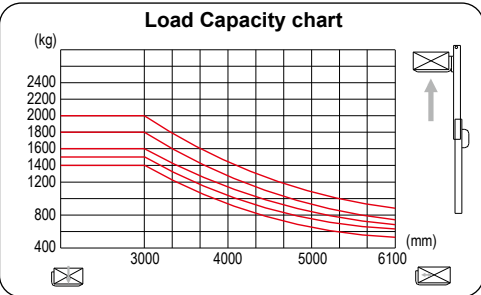
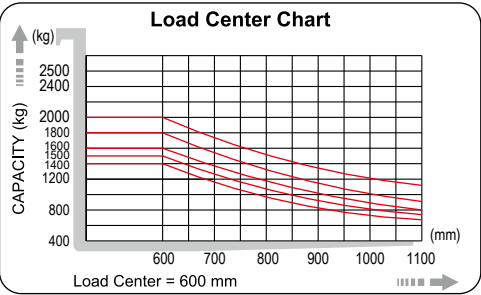
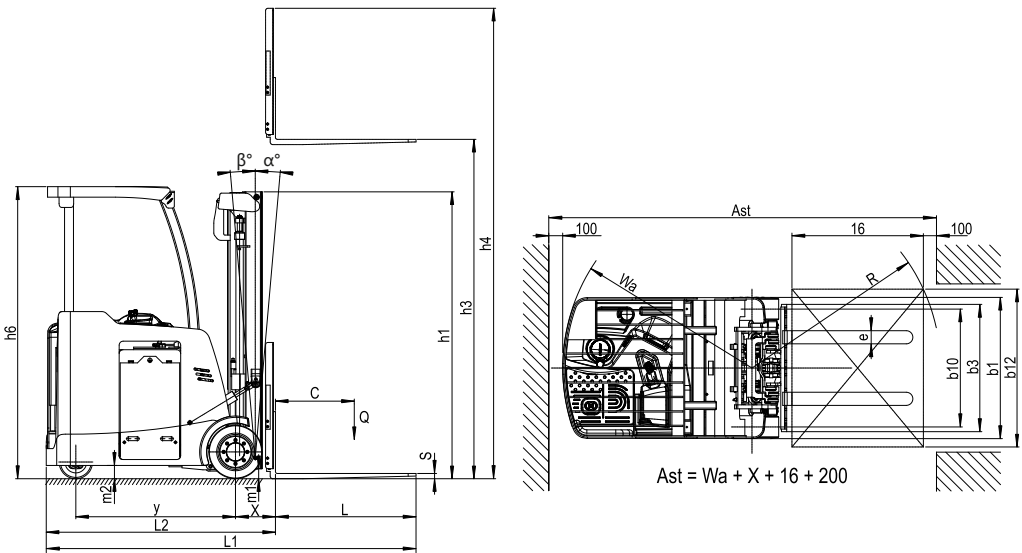
- Easy reach to electrical system while open the front cover, easy for maintenance.
- Driving motor and lifting motor are all with AC system, brushless easy to maintain, external encoder is easy to replace.
- Sideway moving battery with lock system it is convenient for maintenance.
- Lifting function will be cut off while battery discharge is over 80%.
- The multi-function display with error code can easy to check troubles of truck.

Option

- Reading light
- Electric fan
- Sideshift and other accessories of the forklift

Model		T-CPD20SR-16	T-CPD20SR-18
Load capacity / rated load	Q (kg)	1600	1800
Load center distance	C (mm)	600	600
Distance from front axle tofork	X (mm)	300	300
Wheelbase	Y (mm)	1200	1260
Tyre size ( front )	spring solid wheel	16x7x10,5	16x7x10,5
Tyre size ( rear )	solid wheel	10x5x6.5	10x5x6.5
Wheel ( number - front )		2	2
Wheel ( number - rear )		2	2
Thread ( front )	b10 (mm)	896	896
Thread ( rear )	b11 (mm)	176	176
Tilt of mast ( fork carriage forward )		5	5
Tilt of mast ( fork carriage backward )		5	5
Mast height ( lowered )	h1 (mm)	2000	2000
Free lift height	h2 (mm)	option	option
Lift height	h3 (mm)	3000	3000
Height ( mast extended )	h4 (mm)	4050	4050
Overall width	b1 (mm)	1075	1075
Fork dimensions ( S x E x L )	mm	40 x 100 x 920 (1070)	40 x 100 x 920 (1070)
Fork frame width	b3 (mm)	1000	1000
Bottom of mast height ( laden )	m1 (mm)	70	70
Truck body height off the ground	m2 (mm)	90	90
Aisle width for pallets 1000 x 1200 crossways	Ast (mm)	3060	3120
Aisle width for pallets 800 x 1200 lengthways	Ast (mm)	3160	3220
Turning radius	Wa (mm)	1440	1500
Travel speed ( laden / unladen )	km/h	9 / 9.5	9 / 9.5
Gradeability ( laden / unladen )	%	10 / 15	10 / 15
Brake		Electric	Electric
System pressure	bar	150	160
Battery voltage ( nominal capacity )	V/Ah	36/800	36/900
Battery weight	kg	950	1100
Travel control		AC	AC
Service weight ( without battery )	kg	3060	3120

Remark : The data is based on the lifting height 3000mm; Lifting height from 3000mm to 6000mm are available;



DOC. S/N:DEB082 Edition: 01

No. 5, Zili 1st Road , Nankang Industrial Zone,Nantou city 540, Taiwan R.O.C.  
TEL: +886-49-2263800  
FAX: +886-49-2252919  
Website: www.tailift.com  
E-mail: insales@tailift.com.tw